

Size Chart

1

CHEST

Measure the circumference around the widest part of your chest, just under the arms.

2

WAIST

Measure the circumference around your natural waist at its narrowest point.



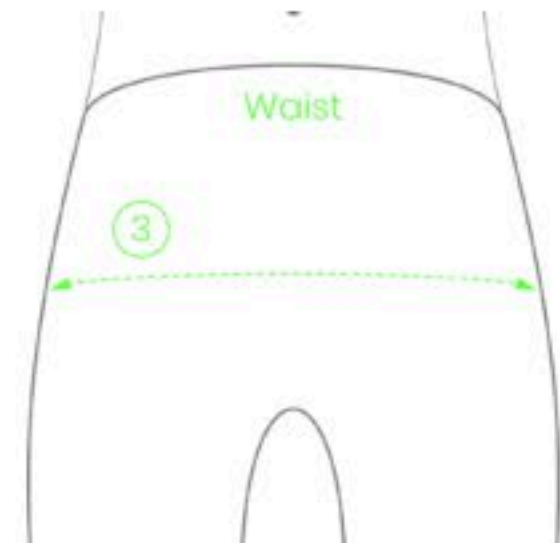
		XS	S	M	L	XL	XXL
Chest	Cm	<85	85-92	93-99	99-105	105-112	113+
	Inches	<34	34-36	36,5-39	39-41	41-44	44,5+
Waist	Cm	74	75-84	82-87	88-92	93-99	100+
	Inches	28	30	32	34	36	38+
Height	Cm	160-170	170-175	175-184	180-188	185-190	188-195
	Inches	63-67	67-68,8	68,8-72,5	71-73,8	72,8-74,8	74,8-77
Weight	Kg	58-64	64-70	70-78	76-85	85-96	100+
	lbs	128-141	141-152	154-172	168-187	190-212	220+

Size Chart

1

WAIST

Measure the circumference around your natural waist at it's narrowest point.



2

HIPS

Measure the circumference at the fullest part of your hips while standing.

		XS	S	M	L
Waist	Cm	64	72	76	82
	Inches	26	28	30	32
Hips	Cm	90	96	102	108
	Inches	36	38	40	42

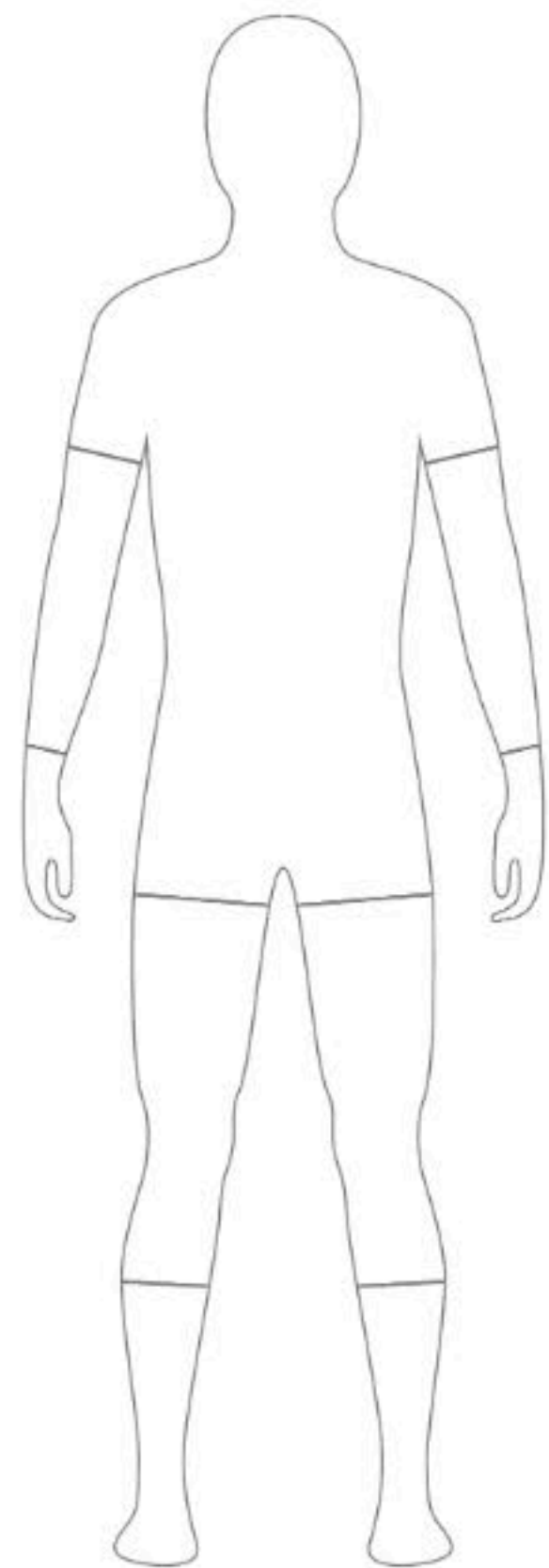
	XS	S	M	L
EURO	36	38	40	42
US	4	6	8	10
UK	8	10	12	14
JAP	9	11	13	15

Size Chart

1

HEIGHT

Your height.



		XS-S	M-L	XL-XXL
Height	Cm	150-175	175-185	185+
	Inches	59-68,8	68,8-72,8	72,8+

Size Chart

1

SHOE SIZE

Use your standard street shoe size.



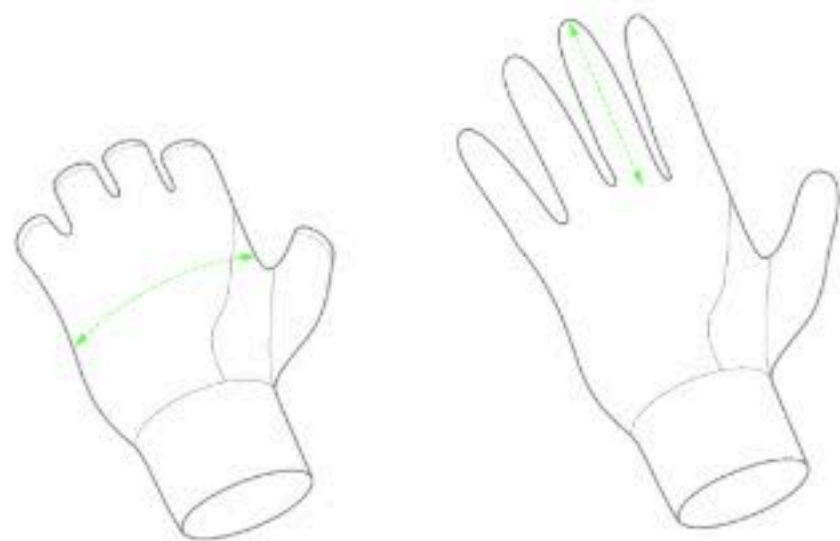
ITA/EU	US	UK
36-39	4-7,5	3-6,5
40-43	8-10	7-9
44-47	11-13	10-12

Size Chart

1

PALM CIRCUMFERENCE

Measure the circumference around the palm starting at the base of the thumb webbing.



2

MIDDLE FINGER LENGTH

Measure from the tip of the middle finger to the crease at the base of the finger.

		XS	S	M	L	XL
Palm Circumference	Cm	19-20	20-21	22-23	23-24	24-25
	Inches	7,5-7,8	7,8-8,3	8,6-9	9-9,4	9,5-9,8
Middle Finger Length	Cm	7,6	8	8-8,6	8,6-9	9-9,6
	Inches	3	3,1	3,1-3,4	3,4-3,5	3,5-3,8

Size Chart

1

HEIGHT

Measure your height.

2

WEIGHT

Measure your weight.



		S-M	L-XL
Height	Cm	155-178	175-190
	Inches	61-70	69-75
Weight	Kg	58-78	78-100
	lbs	128-172	172-220

Size Chart

MEN

WOMEN

1

CHEST

Measure the circumference around the widest part of your chest, just under the arms.



2

WAIST

Measure the circumference around your natural waist at its narrowest point.

3

HIPS

Measure the circumference at the fullest part of your hips while standing.

		XS	S	M	L
Chest	Cm	80	86	92	97
	Inches	32	34	36	38
Waist	Cm	64	72	76	82
	Inches	26	28	30	32
Hips	Cm	90	96	102	108
	Inches	36	38	40	42

	XS	S	M	L
EURO	36	38	40	42
US	4	6	8	10
UK	8	10	12	14
JAP	9	11	13	15

Size Chart

1

CHEST

Measure the circumference around the widest part of your chest, just under the arms.

2

WAIST

Measure the circumference around your natural waist at its narrowest point.



		XS	S	M	L	XL	XXL
Chest	Cm	<85	85-92	93-99	99-105	105-112	113+
	Inches	<34	34-36	36,5-39	39-41	41-44	44,5+
Waist	Cm	74	75-84	82-87	88-92	93-99	100+
	Inches	28	30	32	34	36	38+
Height	Cm	160-170	170-175	175-184	180-188	185-190	188-195
	Inches	63-67	67-68,8	68,8-72,5	71-73,8	72,8-74,8	74,8-77
Weight	Kg	58-64	64-70	70-78	76-85	85-96	100+
	lbs	128-141	141-152	154-172	168-187	190-212	220+

Size Chart

1

CHEST

Measure the circumference around the widest part of your chest, just under the arms.

2

WAIST

Measure the circumference around your natural waist at its narrowest point.



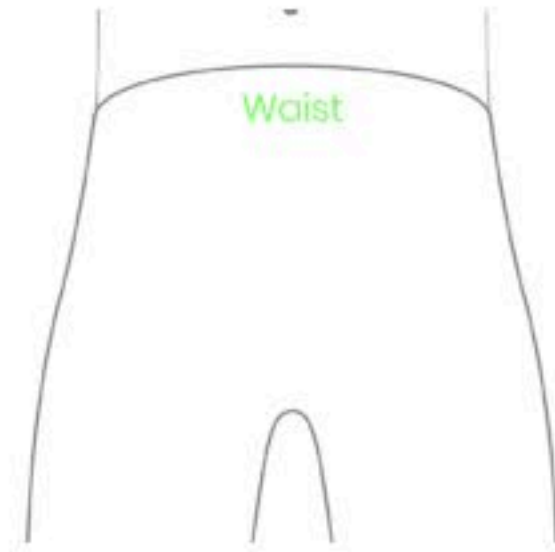
		XS	S	M	L	XL	XXL
Chest	Cm	<85	85-92	93-99	99-105	105-112	113+
	Inches	<34	34-36	36,5-39	39-41	41-44	44,5+
Waist	Cm	74	75-84	82-87	88-92	93-99	100+
	Inches	28	30	32	34	36	38+
Height	Cm	160-170	170-175	175-184	180-188	185-190	188-195
	Inches	63-67	67-68,8	68,8-72,5	71-73,8	72,8-74,8	74,8-77
Weight	Kg	58-64	64-70	70-78	76-85	85-96	100+
	lbs	128-141	141-152	154-172	168-187	190-212	220+

Size Chart

1

WAIST

Measure the circumference around your natural waist at it's narrowest point.



		XS	S	M	L	XL	XXL
Waist	Cm	74	75-84	82-87	88-92	93-99	100+
	Inches	28	30	32	34	36	38+
Height	Cm	160-170	170-175	175-184	180-188	185-190	188-195
	Inches	63-67	67-68,8	68,8-72,5	71-73,8	72,8-74,8	74,8-77
Weight	Kg	58-64	64-70	70-78	76-85	85-96	100+
	lbs	128-141	141-152	154-172	168-187	190-212	220+

Size Chart

1

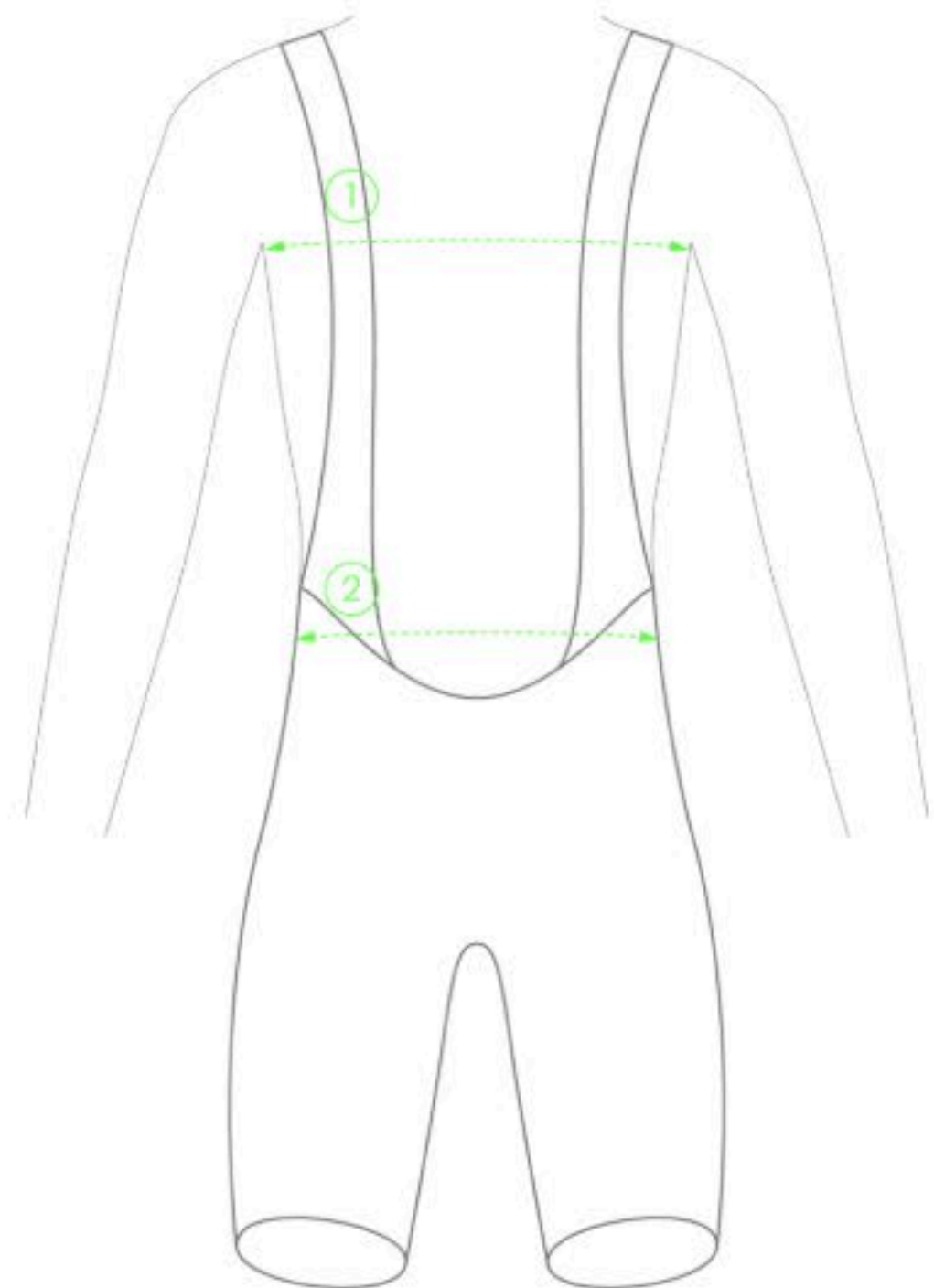
CHEST

Measure the circumference around the widest part of your chest, just under the arms.

2

WAIST

Measure the circumference around your natural waist at it's narrowest point.



		XS	S	M	L	XL	XXL
Chest	Cm	<85	85-92	93-99	99-105	105-112	113+
	Inches	<34	34-36	36,5-39	39-41	41-44	44,5+
Waist	Cm	74	75-84	82-87	88-92	93-99	100+
	Inches	28	30	32	34	36	38+
Height	Cm	160-170	170-175	175-184	180-188	185-190	188-195
	Inches	63-67	67-68,8	68,8-72,5	71-73,8	72,8-74,8	74,8-77
Weight	Kg	58-64	64-70	70-78	76-85	85-96	100+
	lbs	128-141	141-152	154-172	168-187	190-212	220+